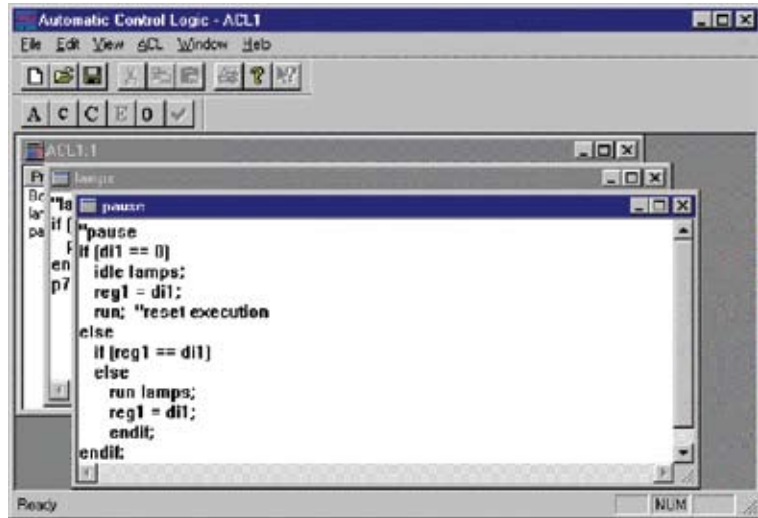




Automatic Control Logic™ Software Module

Weatherford's *Automatic Control Logic* (ACL) software module provides the ability to program the **EXS-1000™** remote terminal unit (RTU) for those situations where applications require specifications different from the available firmware in the RTU.

ACL software is a Microsoft® Windows® compatible program which uses a structured text based language. The intuitive development program allows engineers to use the powerful programming language to create their own logic when needed.



The program supports up to 32 procedures that can perform various tasks and functions. Each group of procedures must have a boot procedure that is provided by the software. When the ACL application is first started, the boot procedure is the only routine listed in the window.

Configuration Manager™ software must be installed in order to run the ACL program.

Ordering Information

Part Number	Description
PC54-00009-01	<i>Automatic Control Logic</i> software module
PC54-00008-00	<i>Configuration Manager</i> software
PC54-00009-00	<i>Configuration Manager</i> software with ACL program module

Microsoft and Windows are registered trademarks of Microsoft Corporation.
Automatic Control Logic, Configuration Manager and EXS-1000 are trademarks of Weatherford



Automatic Control Logic Software Module

Features, Advantages and Benefits

- Powerful programming language
- Add new control logic to RTU
- Write, compile and download from one easy program
- 32 separate programs allowed
- If Then Else decision tree
- Control of digital and analog outputs
- Monitoring of digital and analog inputs
- Access the majority of the RTU parameter base
- 50 parameters for ACL programming (30 integer and 20 floating point)
- Storage for individual procedures
- Arithmetic and conditional expressions
- Enable and disable procedures
- Boot up program for power up initialization

Specifications

Hardware requirements	Personal computer or laptop
Operating system	Windows 95/98/NT/2000/XP
Hard disk requirements	1 Mb